



Global West Suspension

655 SOUTH LINCOLN AVE / SAN BERNARDINO CA. 92408

PHONE 877-470-2975 / FAX 909-890-0703

Web address: globalwest.net

COF-781 Extended travel coilover kit

1970-81 Camaro and Firebird

This kit requires modifying the frame for accepting coilover shocks and springs.

Kit contains the following:

- Left upper mount
- Right upper mount
- Upper mount cutting template
- (6) $\frac{1}{2}$ x 20 x 2 $\frac{1}{2}$ grade 8 bolts
- (12) 12mm flat washers
- (4) $\frac{1}{2}$ x 20 Crimp lock nuts
- (2) $\frac{1}{2}$ x 20 flex lock nuts
- (2) $\frac{1}{2}$ x 20 x 1 $\frac{1}{4}$ grade 5 setup bolts
- (2) $\frac{1}{2}$ x 20 standard setup nuts



Tools for the job

- Marker or Sharpie
- Hammer
- Standard socket and wrench set
- Die grinder
- Cut of wheel
- Scotch bright/ Buffing wheel
- Plasma cutter (If Available)
- MIG/ TIG welder

Installation will require removing both upper and lower controls, springs, shocks, and the upper control arm bolts that are pressed in the frame.

1. With a bare frame to work with, grab the upper mount cutting template out of your kit. This is basically a flat plat with 2 holes drilled in it. Place the plate up against the upper mount with the lip over hanging the mount. Use the two $\frac{1}{2}$ x 20 x 1 $\frac{1}{4}$ bolts with standard nuts furnished in the kit and bolt the plate up to the frame.



Take a marker and trace the edge of the plate along the top of the frame. This is your cut line.

2. Next mark the welds that hold the shock plate on the frame. You are going to grind off the welds and cut along the line you made on the upper arm mount.



The shock mount must be removed.



Left: Cut on the line you marked using the template.



Right: Cut the welds off holding the shock plate.



3. Once the mount is removed it should look something like the photo below. The next step is to slide the new coilover frame mount onto position. Line the bolt holes up. It should fit pretty close to the opening. Some adjustments may be required.

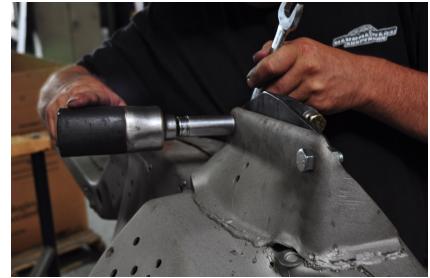
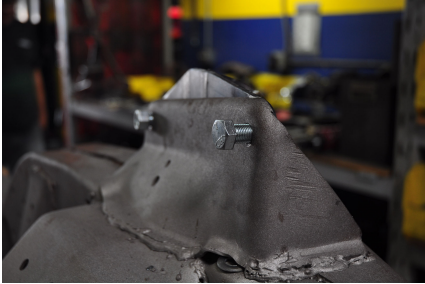


Once the mount is in position using a marker, trace the inside of the hole of the new mount onto the frame. You will need to open the frame up



to the new mounts dimensions.

4. Place the new shock mount back up into the frame and again using the two $\frac{1}{2}$ x 20 x 1 $\frac{1}{4}$ bolts and standard nuts tighten down the mount in the frame.



5. Your next will be to weld the mount into the frame.



6. Once the welding is complete you are ready to prep for painting.

Note: Several shock brands will fit our application. We stock QA-1, Viking, Afco, and Penske.