



655 South Lincoln Ave San Bernardino Ca. 92408

Toll Free 877-470-2975 Fax 909-890-0703

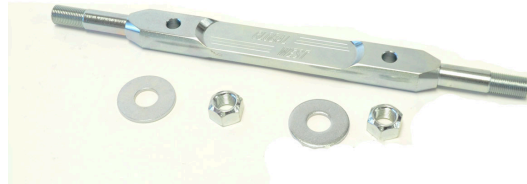
www.globalwest.net

Part # 719 ----- upper control arm shaft

719 shafts fit the following applications:

1963-81 Corvette

1965-1970 Impala,, Biscayne, Caprice



The 719 shaft will fit Global West tubular upper arms CTA-31A and stock control arms using rubber, polyurethane, or Global West Del-a-Lum bushings.

After the shaft is installed in the control arm, use a flat washer and nut supplied in your kit. If you are using rubber bushings, the car must be on the ground before tightening the shaft nuts.

- If you are using a polyurethane bushing you can tighten the nut on the bench.
- If you are using a Del-a-lum bushing, the preload is set on the bench as per instructions.

Final torque spec on the nut is 50 foot pounds for rubber and polyurethane bushings.